



PROFILE OF



ENGINEERINGSPIN LTD.

CONTENTS

ABOUT ENGINEERINGSPIN LTD	3
OUR KEY STRENGTH	4
MISSION	4
VISION	4
VALUES	5
OUR SERVICES	6
DESIGN AND DRAWING	8
SURVEY & SOIL INVESTIGATION	10
STEEL BUILDING CONSTRUCTION	11
PROJECT MANAGEMENT CONSULTANCY	13
RETROFITTING	14
DETAIL ENGINEERING ASSESSMENTS (DEA) & AS BUILD DRAWING PREPARATION	17
PAINT & FINISHING	19
PLUMBING DESIGN AND IMPLEMENTATION	19
MANAGEMENT TEAM	21
OUR TEAM	27
COMPANY ORGANOGRAM	28
OUR FULL LIST OF EXPERTS	29
OUR PORTFOLIO	30
OUR CLIENT LIST	31
OUR STEEL BUILDING EXPERIENCE	32
OUR CLIENT LIST	33
OUR SISTER CONCERNS	35
EQUIPMENT LIST	37
LIST OF MAJOR MACHINERY & EQUIPMENT OF CIVIL WORKS	38
MATERIALS OF CAST-IN-SITU PILE	39
PILE EQUIPMENT	40
LIST OF MAJOR MACHINERY & EQUIPMENT AT MANUFACTURING WORKSHOP	41
LIST OF SOME SURVEY AND LAB EQUIPMENT	41
LEGAL DOCUMENTS	42
PROJECT PHOTOS	48
CONTACT	55



ABOUT ENGINEERINGSPIN LTD

EngineeringSpin Ltd has started its construction business in the **year 2015**. We have taken on many challenging projects and accumulated skills, know-how, and experiences in design and build solutions, construction project management services, building trades, and related engineering works.

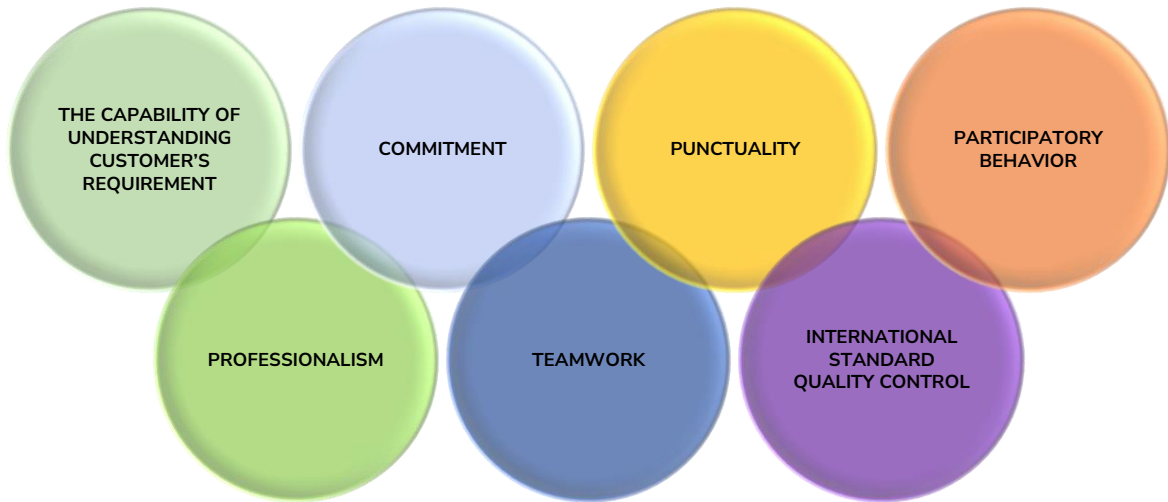
We have deep experience in the dreamless sector of civil works, electrical works, building construction and maintenance, consultancy, and engineering service. We operate cross-platform teams for complex projects fusing different technologies.

Our people are crucial in the delivery of our services and solution to our clients. To ensure that everyone is equipped with the right skill, knowledge, and attitude, a comprehensive training program is put in place to constantly upgrade our people in technical and management skills.

We believe firmly in providing the right training, accredited certification, and practical knowledge for our people, for them to execute their duties and responsibilities confidently. We aim to stay relevant to the ever-changing marketplace and client requirements.

Today, **EngineeringSpin Ltd** takes on the role of the main contractor for small to medium size projects and performs project management services to coordinates specialist trades for industrial/commercial projects. We also provide design inputs and engineering solutions as value-added services to our clients.

OUR KEY STRENGTH



MISSION

Our mission is to focus on exceeding our client's expectations while adding value to their business and customers. We strive to form lasting partnerships that take each project from vision to fruition while achieving maximized sustainability and increased profitability for the organization.

VISION

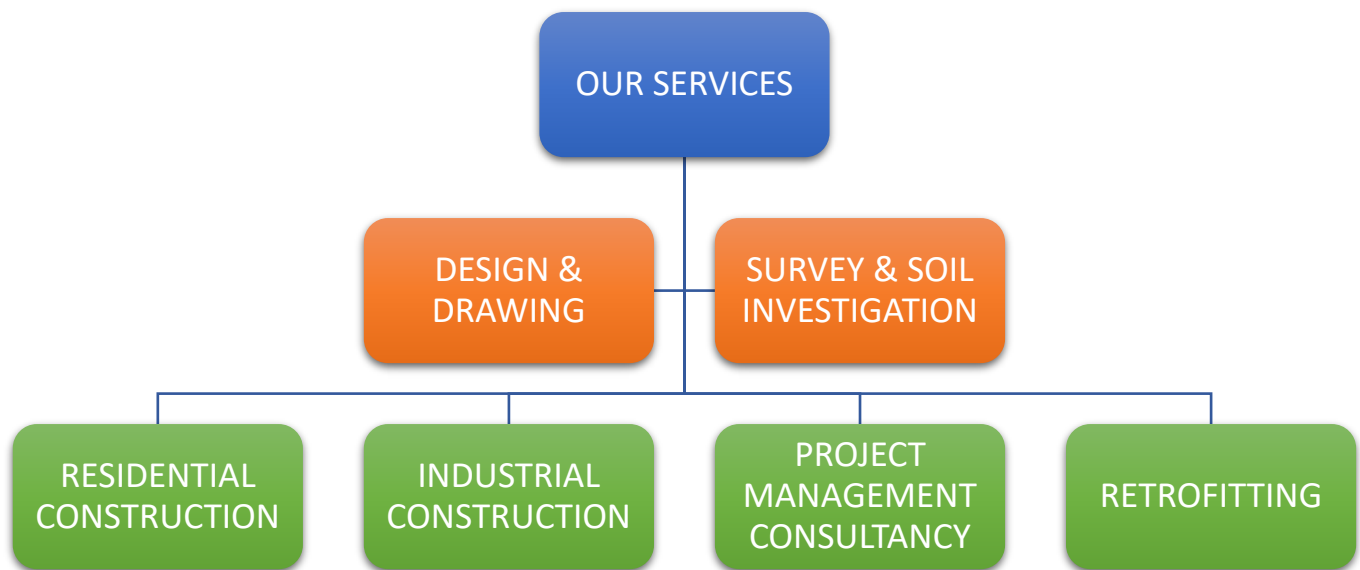
Our vision is to become a global leading company as a construction products manufacturer & construction service provider by using the latest technologies and maintaining maximum safety measures.

VALUES



OUR SERVICES





OUR ADDITIONAL SERVICES

- Detail Engineering Assessment
- As Built Drawing
- Design Vet
- Estimation & BoQ Preparation
- Project Documentation
- Trading of Construction Materials
- Building M&E Works
- Plumbing Design and Implementation

DESIGN AND DRAWING

Our firm specializes in residential, commercial, and industrial architecture in domestic and international markets based in Bangladesh. We provide architectural & structural services using technologically superior processes, providing greater value for clients and enhanced design and construction. The target client is segmented into four categories: HOMEOWNERS, DEVELOPERS, GOVERNMENT, AND CONTRACTORS.

Our architecture's competitive edge will be the knowledge of digital-based design resources. Superior customer service will also be a point of firm differentiation.

DESIGN CODES WE FOLLOW

The buildings are designed by the following codes: BNBC-2008 (Bangladesh National Building Codes) IBC-2006 (International Building Code) a. Loads are applied under: ASCE-7-05 (American Society of Civil Engineers) MBMA-2005 (Metal Building Manufacturers Association)

SUPPORTING SOFTWARE

STAAD PRO-2006

ETABS-9

SAP-14 AUTODESK ROBOT MILLENNIUM.

AUTOCAD-2007, 2010, 2014

3D STUDIO MAX 9

SKETCH UP

COREL DRAW GRAPHIC

ADOBE PHOTOSHOP CS2

ILLUSTRATOR 8

AUTODESK REVIT

PLANSWIFT 10

SERVICE

Architectural Services Including Planning.

Offering Interiors, Urban Design, Project Management, Lighting, And Graphics.

Serves Commercial, Industrial, Residential Institutional, And Aviation.

FEW OF OUR DESIGNED PROJECTS



SURVEY & SOIL INVESTIGATION

DIGITAL SURVEY

We provide expert services in the field of land surveying, specializing in environmental, property, and land development schemes. We have diverse experience in working in various locations in Bangladesh. We also provide mapping, volumetric analysis, and engineering survey control, all of which complement large and small-scale topographic surveys in both the public and private sectors. Backed up with the latest GPS, CAD, Infra-red, Laser Equipment, and Technology, a high-quality service helps us to maintain a portfolio of longstanding clients. Survey and geographic data are often the start point of a project. The correct professional attention will minimize risks and ensure correct dimensional control.

OUR SERVICES

- ❖ Land Surveying and Leveling
- ❖ Detail Topographic Surveys
- ❖ Topographic Pre-Design Surveying
- ❖ Boundary & Right-Of-Way Line Surveying
- ❖ Cad Drafting
- ❖ Construction Surveying
- ❖ Subsurface Utility Locating and Mapping
- ❖ Demarcation Services
- ❖ Gate Level Computation Services
- ❖ Settlement Monitoring
- ❖ Earthworks Volumes
- ❖ Establishment Of Control Station and Benchmarks

SOIL INVESTIGATION

At EngineeringSpin Ltd, our geotechnical services provide you with a diverse range of analyses for both surface and subsurface exploration of your site. Our services include everything from routine testing, on-offshore analyses, and problem-solving through design and monitoring of the earthworks and structure foundations.

OUR SERVICES

- ❖ Unconfined Compression Test
- ❖ Moisture Content Test
- ❖ Unit Weight Test
- ❖ Specific Gravity Test
- ❖ Grain-Size Analysis Test
- ❖ Direct Shear Test
- ❖ Atterberg Limit Test
- ❖ Consolidation Test

STEEL BUILDING CONSTRUCTION

EngineeringSpin utilizes the latest engineering software's for structural steel analysis, connection design, shop drawings preparation, and state-of-the-art computer numerical coded (CNC) equipment for fabrication. We are committed to meeting the quality certification requirements for the standard for steel building structures by the AMERICAN INSTITUTE OF STEEL CONSTRUCTION (AISC), USA.

Esl's steel building solutions include architectural, engineering, manufacturing, construction, and project management. Depending on the client's requirements we deliver the richest form with at the lowest possible cost. Esl offers a unique combination of consulting plus contracting models by assisting its customer right through the inception of the project.

Esl's diversified teams consist of – the architects, trade engineers, and construction professionals. All work together closely with customers to plan, design, build and manage the projects and meet unusually high standards of time, quality, and cost.

OUR SERVICES:

- ❖ Pre-Construction Design and Budgeting
- ❖ Design-Build
- ❖ Fabrication
- ❖ Erection
- ❖ Types Of Steel Construction Services We Provide:
- ❖ Conventional Steel Fabrication
- ❖ Single Slope Frames
- ❖ Modular Frames
- ❖ Bolted Steel Construction
- ❖ Light Gauge Steel Construction
- ❖ Clear span Frames

FEW OF OUR PROJECTS



PROJECT MANAGEMENT CONSULTANCY

EngineeringSpin's project management consultancy business unit supports contract execution throughout the project life cycle and provides a single point of customer contact. Teams are staffed by experts with extensive experience managing large to small infrastructure development and helping clients control the cost of their investments

WHAT WE PROVIDE

- ❖ Project Planning
- ❖ Project Management
- ❖ Resource Planning And
- ❖ Budgeting
- ❖ QA/QC Control
- ❖ Project Control
- ❖ Engineering Supervision
- ❖ Supervision Of Procurement
- ❖ Commissioning.

WE ACTIVELY MANAGE PROJECT RISK BY:

- ❖ Meeting Quality, Health, Safety, And Environmental Expectations, Including Flow Down Through the Prime, Sub, And Sub-Subcontractors.
- ❖ Delivering On Schedule and Meeting Budget Targets.
- ❖ Obtaining Experienced, Qualified Personnel.
- ❖ Managing Contractors, Especially During the Construction Phase.
- ❖ Delivering Fit-For-Purpose Facilities.
- ❖ Achieving Client's Targets. Using Proven Tools, Technology, And Methods.

RETROFITTING

The main goal of retrofitting is to stabilize the current structure of buildings and make them earthquake resistant. Retrofitting is the method of modifying or repairing something after it has been manufactured. Retrofitting work includes changing or repairing the structure system of a building after its construction and occupation. This work resulted in increased safety and durability of the structure. Retrofitting of buildings is required for homes that are affected by failures and damage by seismic forces. Retrofitting done for your home makes it resistant to seismic activity caused by earthquakes.

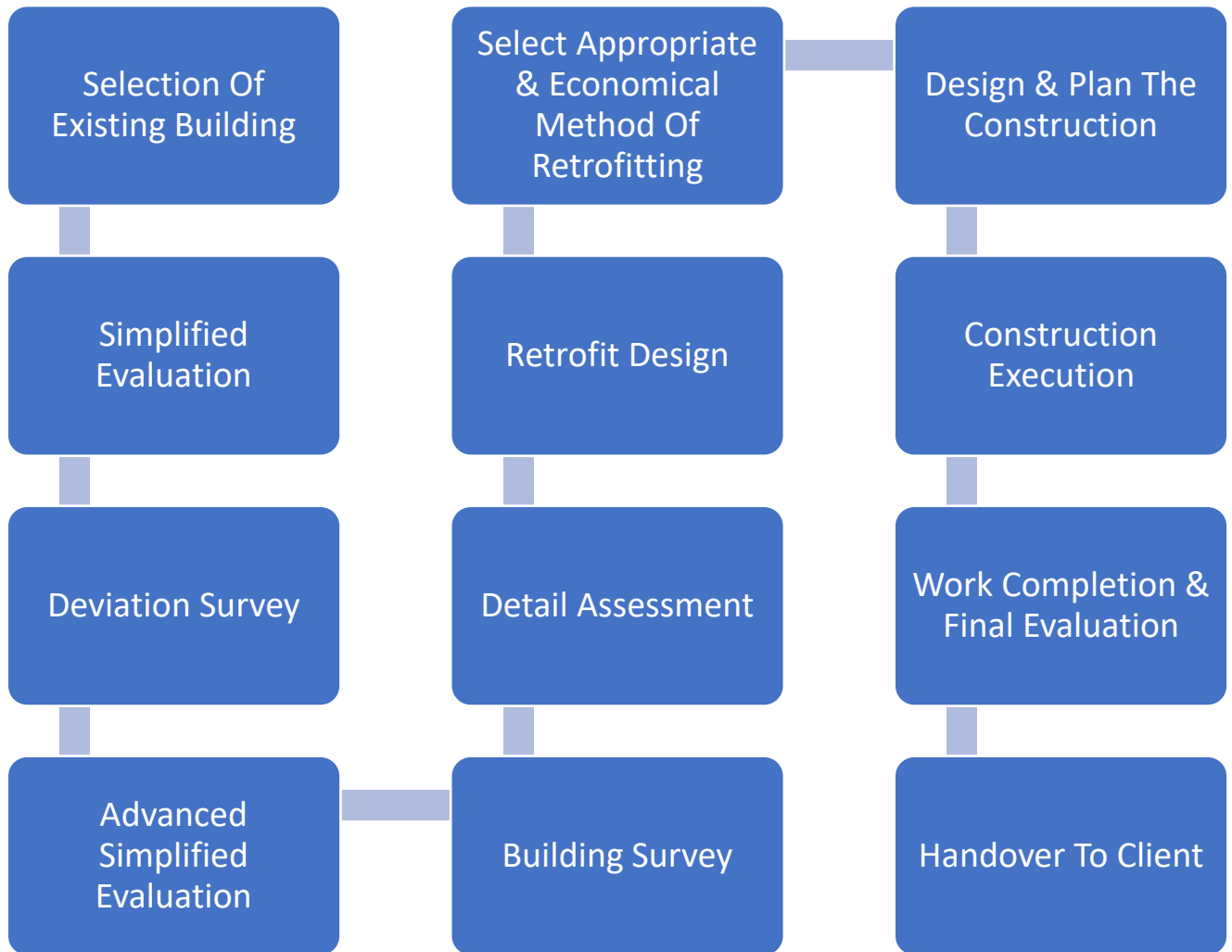
Today, ESL takes on the role of the main contractor for small to medium size projects and performs project management services to coordinates specialist trades for industrial/commercial projects. We also provide design inputs and engineering solutions as value-added services to our clients.

We take pride in meeting the delivery of multiple retrofitting projects inside Bangladesh. This only has been possible because of our professional project management practices, skilled engineers, and industry expert people are in the ESL team.

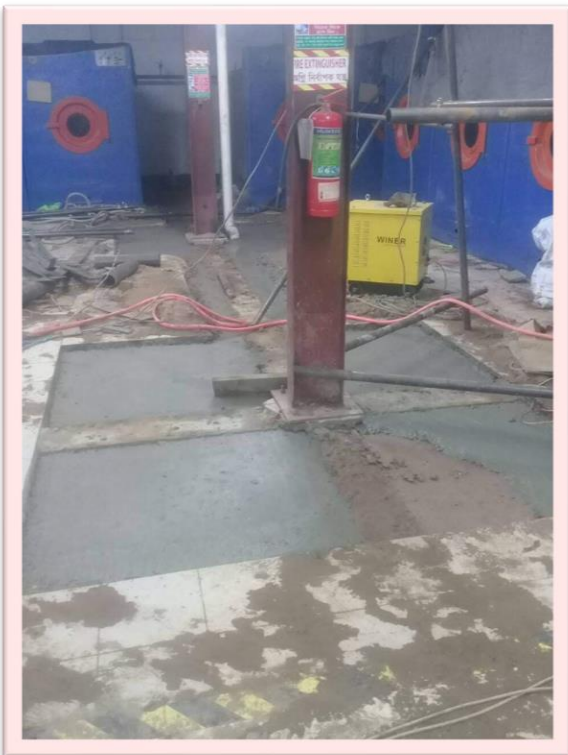
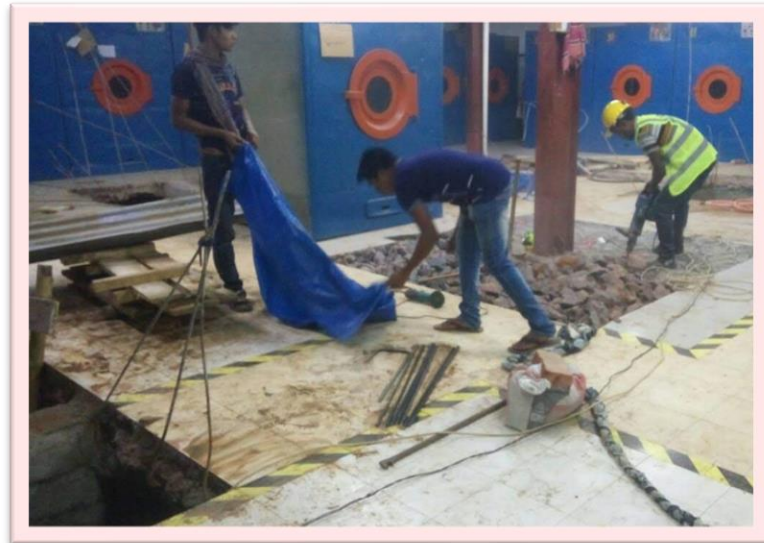
APPLICATION OF RETROFITTING

- ❖ Structural Cracks.
- ❖ Damage To Structural Members.
- ❖ Excessive Loading.
- ❖ Errors In Design or Construction.
- ❖ Modification Of the Structural System.
- ❖ Seismic Damage.
- ❖ Corrosion Due to Penetration- Honeycombs.

OUR APPROACH:



FEW OF OUR PROJECTS



DETAIL ENGINEERING ASSESSMENTS (DEA) & AS BUILD DRAWING PREPARATION

EngineeringSpin Ltd is experienced in the detailed engineering assessment of garments building under accord & alliance. Detail engineering assessment has been done for more than 30 buildings.

A DEA is necessary when there is insufficient information and documentation on the building structure to determine the safety of the structure.

OUR SERVICES

- ❖ An Engineering Analysis Report
- ❖ Reproducing Drawings and Calculations with References.
- ❖ Structural Analysis and Style of The Steel-Concrete Composite Structure
- ❖ Structural Analysis and Style of Structure
- ❖ Carrying Capacity of The Soil

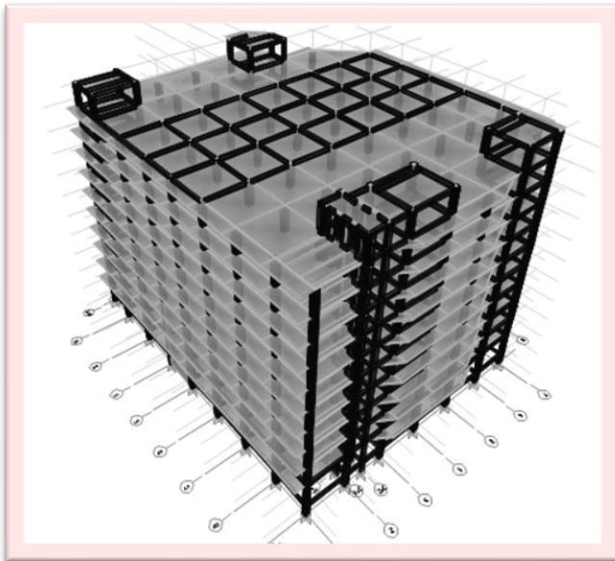
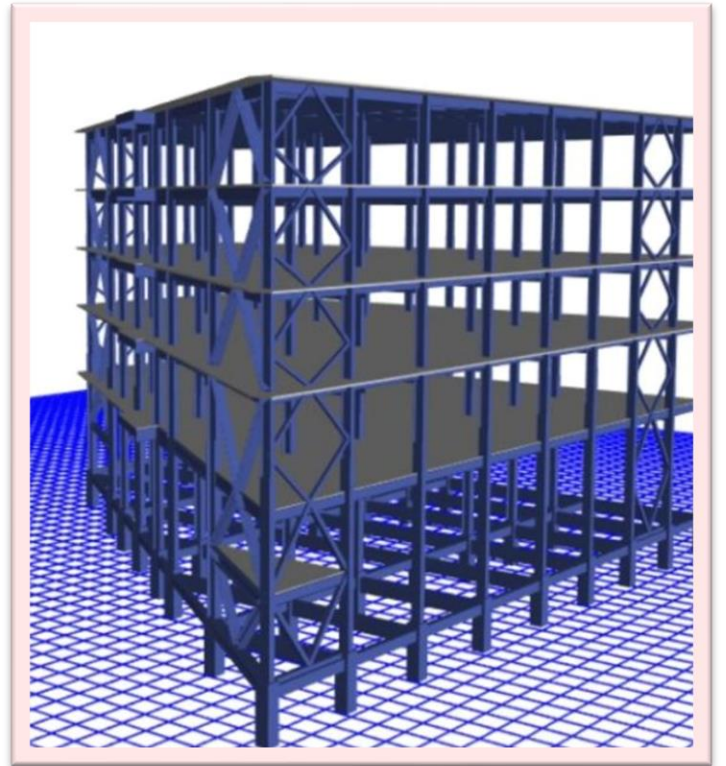
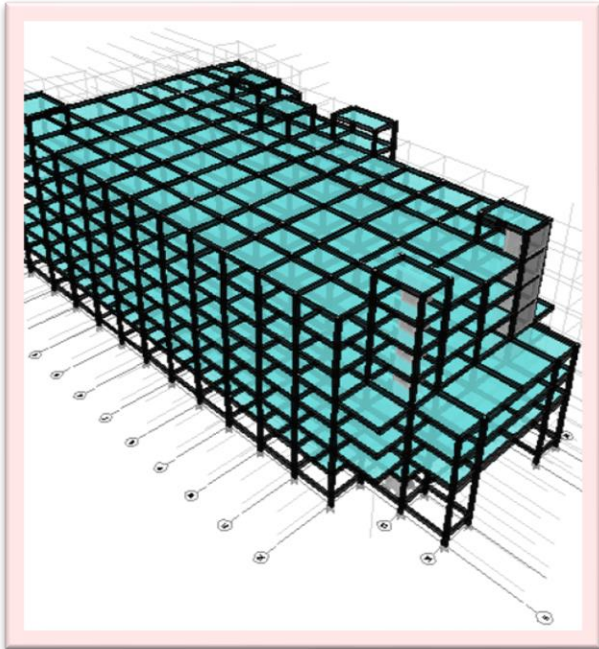
OUR ENGINEERING TEAM WILL PREPARE AN ASSESSMENT REPORT THAT COVERS THE FOLLOWING:

- ❖ As-Built Drawings Including
- ❖ Plans At Each Level Call Up and Dimension All Structural Components
- ❖ Cross-Sectional Drawings Showing Structural Beams, Slabs, Floor to Floor Heights, Roof

BUILD-UPS AND BASIC DESIGN INFORMATION OF THE STRUCTURE

- ❖ Highlight Any Variation Between as Built Compared to The Designed Structure
- ❖ Results Of Testing for Strength and Materials
- ❖ Results Of Geotechnical Assessment and Testing/Investigation
- ❖ Details Of Loading, Inputs, And Results of Computer Modelling
- ❖ Commentary On Adequacy/Inadequacy of Elements of The Structure
- ❖ Schedule Of Any Required Retrofitting Required for Safety or Performance of Structure

FEW OF OUR PROJECTS



PAINT & FINISHING

Our line of commercial painting services includes interior painting, exterior painting, power washing, colour consulting, and more. If you have a residential, commercial, or any apartment property in need of professional painting services, contact us today. We will provide a clear and timely estimate and get the job done quickly. See below for our full range of commercial painting services.

However, painting isn't as easy a task as it could seem but requires the expertise and skills of dedicated and experienced painters to make sure that the work is completed is of high quality.

Home painting could seem like a simple task, but it is something that is best left to a knowledgeable painter to manage. Here we can help you.

- ❖ Experience With Preparation of Painting Work
- ❖ Expertise In Several Paints, Shades, And Finishes
- ❖ Efficient And Effective Work with No Wastage
- ❖ Neatness And Cleanliness
- ❖ Timesaving

PLUMBING DESIGN AND IMPLEMENTATION

We take a different approach to plumbing. Our design team separates plumbing from our other areas of expertise to allow for complete specialization. Safely and efficiently channeling significant amounts of water is a challenging task, but one we're authority in. Our design process incorporates the newest technologies and materials to harness the fundamentals of pressure and gravity. It also allows for the seamless integration of the system into the overall facility, minimizing the amount of material usage and ultimately ensuring an improved bottom line.



MANAGEMENT TEAM





ZIAUL ISLAM SWAPON
CHAIRMAN

- ❖ Mr. Ziaul Islam Swapon, a well-seasoned professional with an illustrious track record, founded EngineeringSpin limited. Before forming the company, he started a partnership business in construction and real-estate development back in 2013 when he was the consultant & certified lead auditor to audit garments and other industrial & manufacturer companies in Bangladesh in building, fire and electrical safety, occupational health, safety & environment, social responsibility management, environmental management system, etc.
- ❖ Mr. Ziaul Islam Swapon is a highly skilled management professional with over 16+ years of extensive work experience in various senior management positions in managing and operating renowned local and multinational organizations.



ENGR. A.S. M. RAKIBUL HASSAN
MANAGING DIRECTOR

- ❖ The Managing Director of EngineeringSpin Ltd is Engr. ASM Rakibul Hassan who had been graduated from Shahjalal University of Science & Technology (SUST) in Civil & Environmental Engineering (CEE), comes with a long and distinguished professional experience of about 17 years in Project Management, Quality Assurance in civil construction for both in the residential and industrial sector.
- ❖ He started his carrier as a project engineer at Niloy Engineering and later worked as a project manager at Building for Future Limited. He also served at Auspicious & Sunman Group of Industries on the senior management level.
- ❖ Mr. Rakib has extensive experience in infrastructure design, implementation, and measure. Also, an expert on structural & finishing works.
- ❖ He believes in the speed of work and the empowerment of the concerned workgroup. He encourages his staff by giving training, personal care, and awarding. He upholds the friendly working environment in the company and maintains it through constant monitoring of the work progress.

FEW OF THE PROJECTS COMPLETED BY ENGR. A.S. M. RAKIBUL HASSAN:

- ❖ Gagan Shirish, Panthapath, 2B+G+15 With 217800 Sft
- ❖ Krishnachura, Azimpur, B+G+9 With 106700 Sft
- ❖ Tulips & Anjelica, Gulshan, "G+6 & G+8" With 96000 Sft

- ❖ Akashmoni, Wari, 2b+G+8 With 80300 Sft
- ❖ Polwel Carnation, Abdullahpur, B+G+6 With 312000 Sft
- ❖ Banani Bely, Banani, G+8 With 35820 Sft
- ❖ Irish Noorjahan, Kakrail, 3b+G+17 With 220500 Sft
- ❖ Z-3 Knitwear, Azmat Group, B+G+6 With 112800 Sft
- ❖ Azmat Apparels, Azmat Group, B+G+6 With, 246000 Sft
- ❖ Fareast Dresses Ltd., Azmat Group, G+6 With 227000 Sft
- ❖ Abdul Hakim City Plaza, Shakhari para, 2b+G+14 With 237800 Sft
- ❖ Zam City Plaza Hospital Road, Maijdee, 2b+G+14 With 213400 Sft
- ❖ Grand Haque, Sonapur, Maijdee, 2b+G+14 With 237800 Sft
- ❖ Barnamala Tower, Rajshahi, G+B+9 With 115830 Sft

SYED NURUZZAMAN LIMON

DIRECTOR & CHIEF COMMERCIAL OFFICER

❖ Mr. Syed Nuruzzaman Limon is the Chief Commercial Officer of EngineeringSpin Ltd. He has 14+ years of experience in Software, Telecommunications, International Wholesale Carriers, and Project



Management in multiple industries before joining ESL.

❖ Graduated from Shahjalal University of Science & Technology (SUST), also an MBA in Finance from EAST-WEST University, Dhaka. He started his career as a Software Engineer later promoted to Head of Operation of an IGW, Chief Operating Officer of a Dredging & Engineering Company in Bangladesh.

❖ Completed private Dredging projects, Govt Dredging projects, Contracting job under Bangladesh Army, Construction project under Bangladesh Navy.

Completed 205.16 million valued projects also in charge of a construction project of 766.51 million BDT under Payra Port Authority and Bangladesh Navy since October 2018.

❖ He also took part in industry trade shows held in countries including the US, Singapore, UAE, and India and Presented the company as well as the country successfully. He also has a strong magnetism over books and journals apart from traveling.



MOHAMMAD NUR ALAM
DIRECTOR & CHIEF STRUCTURAL ENGINEER

❖ The Chief Structural Engineer of EngineeringSpin is Engr. Mr Nur Alam who had been graduated from Shahjalal University of Science & Technology (SUST) in Civil & Environmental Engineering (CEE), comes with a long and distinguished professional experience of about 20 years in structural design, project management, quality assurance in civil construction for both in the Residential and Industrial sector.

❖ Throughout his carrier Mr Alam has completed and delivered many successful projects including structural design of twenty-five storied to five storied commercial and industrial sectors. He served as a project manager of WALON Industries Ltd for design & construction of industrial RCC & Steel Building, Internal Road construction, Interior construction, Land Development, Construction Management.

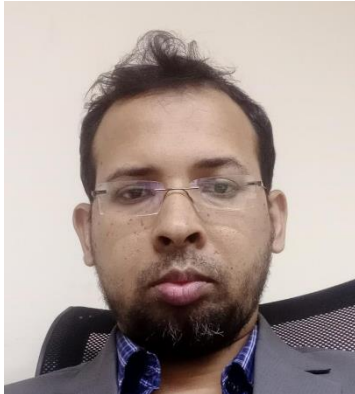
FEW OF THE PROJECTS COMPLETED BY HIM:

- ❖ Construction Of 25 Storied Plus 2 Basement Commercial Buildings (Lily Pond Center) At Motijheel, Dhaka.
- ❖ Construction Of 18 Storied Plus 3 Basement Commercial Cum Residential Building (Iris Nurjahan) At Kakrail, Dhaka.
- ❖ Structural Design Of 17 Storied With 2 Basements Commercial Cum Residential Building (Fare Diya) At Pantha Path, Dhaka.
- ❖ Structural Design Of 12 Storied With 2 Basement Residential Buildings Atmohammadpur, Dhaka.
- ❖ Structural Design Of 10 Storied Residential Buildings (Fare Uttara City), Uttara, Dhaka.
- ❖ Structural Design Of 10 Storied With 1 Basement Commercial Cum Residential Building (Fare New Market) At Chowmohoni, Noakhali.
- ❖ Structural Design Of 15 Storied With 1 Basement Commercial Cum Residential Building (Posarihousing Ltd) At Bogra.
- ❖ Structural Design Of 10 Storied With 1 Basement Residential Building (Professors Tower) At Manikgonj. Dea (Detail Engineering Assessment), Initial Structural Assessment, Retrofit Design & Construction, Interior Design & Construction, Structural Design & Construction Etc. In Many Companies.



HASAN MAHMUD
DIRECTOR, RESEARCH & DEVELOPMENT

- ❖ Mr Hassan is a well-known icon in the Civil Engineering research industry. Throughout his carrier he has conducted much research and has publications under different banners.
- ❖ Graduated from Shahjalal University and Started his carrier as an Assistant Engineer. From the beginning of his carrier, he focused on the project design to much laboratory research. He also consulted many local and international organizations. Such as the design of water retention facilities with the WSUD concept. Design of special water treatment structures. Prepared different maps with arc GIS platform for workflows.
- ❖ Design & analyze- the master plan of the power plant in terms of different structural components i.e Engine Hall, Engine Platform, Electrical Annex, Silencer Structure, Boiler Structure, Eg Stack, Radiator, Tank Firm, Fuel Treatment Plant, Pump House, Water Treatment Plant, Sub-Station Etc
- ❖ Design utility master plans considering pollution loads with the WSUD approach and many more.



SYED RAFIUL HUSSAIN
CONSULTANT, ARCHITECT

- ❖ Mr Rafiul is a bachelor of architect from SUST. Within the 13 years he has been engaged in Architectural Design & Drawing, Project Management, Project Coordination, Manual/ Methodology/ Contract Agreement Preparation, Project Planning & Monitoring.
- ❖ A well-reputed architect from the town having a good record of having approved designs from RAJUK and many Authorities. Not only Residential but also in the Industrial sector MR Rafiul have an incredibly significant footprint of his works.

A FEW OF HIS WORKS ARE AS FOLLOWS:

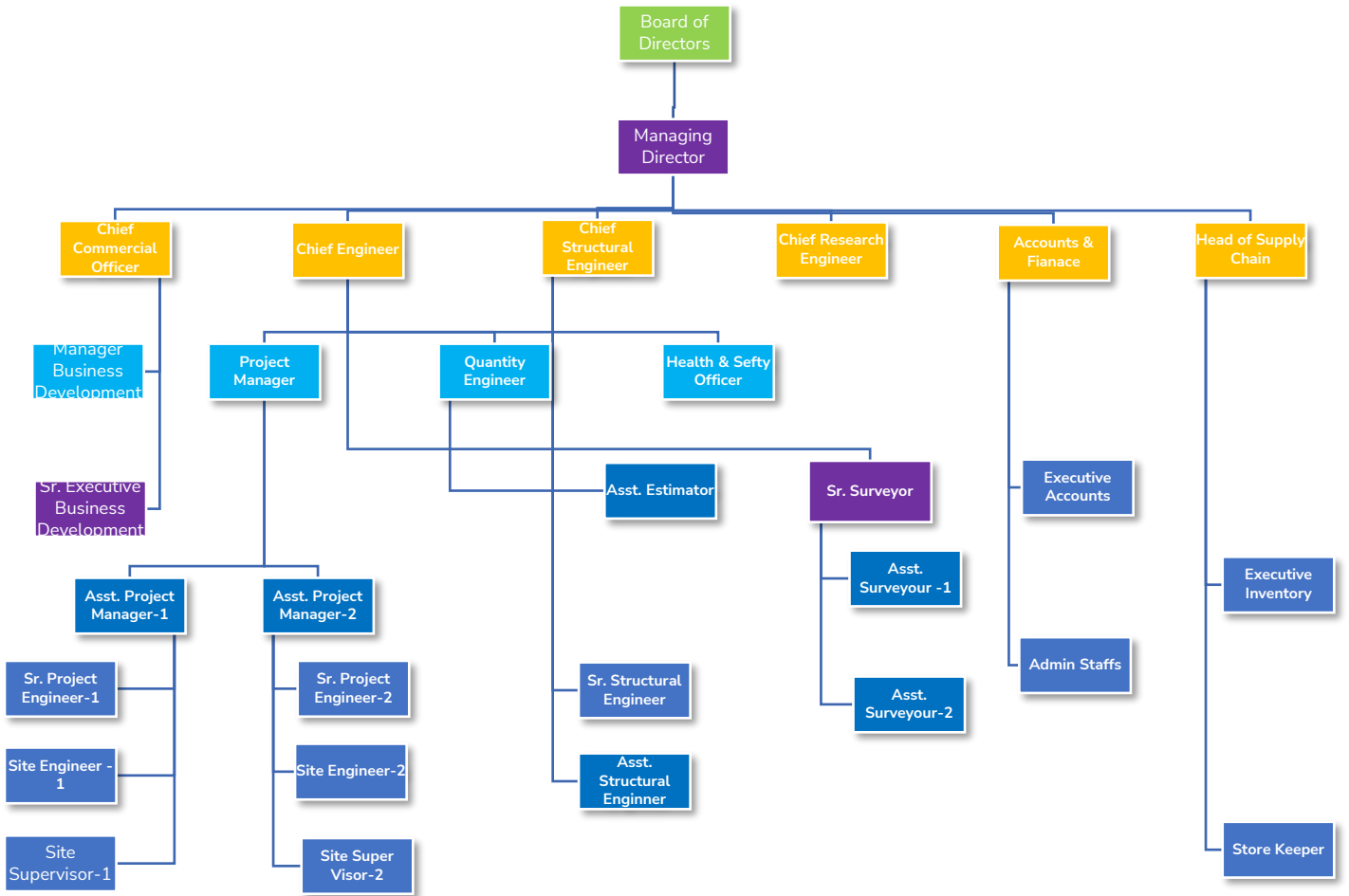
- ❖ “Ispahani Tea Factory” (Master Plan) At Srimongal, Moulovibazar, Sylhet.
- ❖ Design 13 Storied Mixed-Use Building at Warelesmor, Chandpur
- ❖ 7 Storied Residential Building at Niketon, Gulshan -1, Dhaka.
- ❖ 8 Storied Residential Building at Shahjadpur, Gulshan -1, Dhaka.
- ❖ 6 Storied Residential Building at Mirpurdohs, Dhaka.
- ❖ 10 Storied Residential Building at Bashubdhara, Block-A, Dhaka.
- ❖ 8 Storied Residential Building at Sarulia, Demra -1, Dhaka.
- ❖ 8 Storied Residential Building at R.K. Mission Road, Mymensingh.

- ❖ 2storied Building for Staff Accommodation at Srimongal, Moulovibazar. (Ispahani Tea_)
- ❖ 5storied Commercial Building at Ramgonj lakshmpur, (City Plaza) Of City Group.
- ❖ Complete Master Plan of Way Agro Limited, Osmaninagar, Sylhet.
- ❖ 10storied Commercial Building, Satarkul, Northbadda, Dhaka.
- ❖ 3storied Mosque at Narayangonj Epz. (Fakir Group)
- ❖ Housing Project Uday Green City. Stark, North Badda, Dhaka.
- ❖ Resort: Rose Valley Resort, Dhamrai, Savar. Dhaka.
- ❖ Western Camp Resort, Taranagor, Keranigonj, Dhaka.
- ❖ 4storied Printing Building (Fakir Group) Narayangonj Epz.
- ❖ Sarker Steel Ltd. Extension at Dhamrai, Savar, Dhaka
- ❖ Etta & Tiles at Gazipur.
- ❖ Toweltex Ltd, At Chandra, Gazipur.
- ❖ Four Storied Tannery Building, Hemayetpur, Savar, Dhaka. (Kohinoor Tannery)
- ❖ 7 Storied Tannery Building, Hemayetpur, Savar, Dhaka. (Salma Tannery)
- ❖ 6 Storied Tannery Building, Hemayetpur, Savar, Dhaka. (Anower Tannery)
- ❖ 6storied Tannery Building, Hemayetpur, Savar, Dhaka. (Shadhin Tannery)
- ❖ Space Textile Ltd. Zirani, Savar, Dhaka.
- ❖ Taher Apparels Ltd., Dokkhinkhan, Uttara, Dhaka.

OUR TEAM



COMPANY ORGANOGRAM



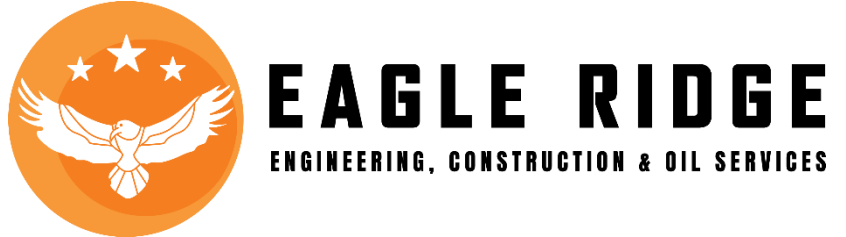
OUR FULL LIST OF EXPERTS

SL	DOMAIN	NO. OF RESOURCE
1	Architect	2
2	Structural Engineers	3
3	Project Manager Civil	5
4	Project Manager Electrical	3
5	Project Manager Mechanical	2
6	Project Engineer Civil	12
7	Supervisor	10+
8	Heavy Equipment Operator	12+
9	Mason	40+
10	Labour	120+

OUR PORTFOLIO



OUR CLIENT LIST



&more

OUR STEEL BUILDING EXPERIENCE



OUR CLIENT LIST

SL	PROJECT	TYPE OF WORK	PROJECT DURATION	TYPE OF WORKS
1	TVS Warehouse at Mirpur-1	Prefabricated Steel Building Factory Warehouse, Drain, ETP, Internal Road & Others. Area: 1,58,000 Sft Nature: Subcontract	1 Years	Subcontract
2	Oscar Bangla Co Ltd	Prefabricated Steel Building Printing Factory & Warehouse. (Both Construction & Consultancy Work As A EPC Contractor) Area: 87,000 Sft Nature: Subcontract	6 Months	Subcontract
3	Focus Auto Bricks Ltd	Prefabricated Steel Building Auto Bricks Factory with Clay Shed. (Both Construction & Consultancy Work As A EPC Contractor) Area: 1,40,000.00 Nature: Subcontract	1 Years	Subcontract
4	SM Accessories Ltd,	(Auto Board Cartoon, Bonded Warehouse & Poly Crusher Building) Prefabricated Steel & Civil Works. (Both Construction & Consultancy Work As an EPC Contractor) Area: 1,59,000 Sft	1 Years	Subcontract
5	TVS Warehouse At Beribadh	Project, Prefabricated Steel Building Factory Warehouse, Drain,	9 Months	Subcontract

		Boundary Wall & Others. Area: 1,58,000 Sft		
6	CREC (China Railway Engineering Corporation)	Station Building Construction at Jajira, Madaripur.	6 Months	Subcontract
7	ANFORDS Bangladesh Ltd	Prefabricated Steel Factory Building Area: 30,000 Sft	6 Months	Subcontract
8	Euroknit Spin Ltd	Prefabricated Steel Building Spinning Mill Construction.	6 Months	Subcontract
9	SECURA Bangladesh Ltd	Prefabricated Steel Factory Building Area: 15,000 Sft	7 Months	Subcontract
10	Premier Printing Press	Prefabricated Steel Factory Building Area: 60,000 Sft	6 Months	Subcontract
11	Glory Agro Products Ltd	Prefabricated Steel Factory Building Area: 20,000 Sft	8 Months	Subcontract

OUR SISTER CONCERNS





Morium Trading Corporation



EDIFICE

Construction & Consultants

BLUEdot
Engineering & Technology Limited

EQUIPMENT LIST

LIST OF MAJOR MACHINERY & EQUIPMENT OF CIVIL WORKS

SL. NO.	NAME OF EQUIPMENT AND MATERIALS	QUANTITY
1	Mixer Machine	3 NO.
2	Hand Mixer (Mc)	1 NO.
3	Vibrator Machine	6 NO.
4	Drill Machine	3 NO.
5	Grinding Machine (4" And 7")	4 NO.
6	Welding Machine	3 SETS
7	Rebar Cutter	2 NO.
8	Gas Welding	2 SETS
9	Cylinder Mold	4 SETS
10	Chain Pully	1 NO.
11	Epoxy Gun	2 NO.
12	Roof Hoist	1 NO.
13	Hammer Drill	1 NO.
14	Breaker Machine	3 NO.
15	Pump Motor	2 NO.
16	Mud Pump	1 NO.
17	Compactor Machine	1 NO.
18	Steel Props	1270 NO.
19	Scaffolding	3500 SETS
20	Column Shutter	700 SFT
21	Slab Shutter	12000 SFT
22	Truck For Transportation	1 NO.

MATERIALS OF CAST-IN-SITU PILE

SL. NO.	NAME OF EQUIPMENT	QUANTITY
1	Tripod Set	42 SETS
2	Heavy Duty Winch	50 SETS
3	Dorman Engine (4 Cylinder) For Winch	45 SETS
4	Lister Engine (3 Cylinder) For Pump	48 SETS
5	Ruston Engine (3 Cylinder) For Winch & Pump	47 SETS
6	China Engine 24 Hp, 20 Hp & 10 Hp with Generator	32 SETS
7	High-Pressure Mud Pump	52 SETS
8	Drilling Rod (4" To 6" Dia)	925 M
9	Tremie Pipe (6" To 8" Dia)	1136 M
10	Concrete Bucket and Funnel for Casting	48 SETS
11	Trolley Line	2000 RFT
12	Mixture Machine with Engine	55 SETS
13	Welding Machine	48 SETS
14	Electric Motor (30 Hp To 40 Hp)	55 SETS
15	Rod Cutter Machine	31 SETS
16	Bending Machine	5 SETS
17	Japanese Rotary Rig (Up to 1.5 M Dia and 80'-0" Depth)	2 SETS
18	Rotary Rig (Local Made) With All Accessories	6 SETS
19	Hydraulic Minor with All Accessories	2 SETS
20	Bentonite Mixing Plant with All Accessories	5 SETS
21	Pile Head Breaking Machine	5 SETS
22	Hydraulic And Electric System Rotary Rig	2 SETS

PILE EQUIPMENT

SL. NO.	NAME OF EQUIPMENT	QUANTITY
1	Piling Tower - 120'-0"	5 NO.
2	Piling Tower - 100'-0"	3 NO.
3	Piling Tower - 80'-0"	2 NO.
4	Double Drum Winch Machine	12 NO.
5	Drop Hammer - 3.5 Ton	10 NO.
6	Drop Hammer - 2.5 Ton	6 NO.
7	Drop Hammer - 2.0 Ton	6 NO.
8	Diesel Hammer - D-25	6 NO.
9	Diesel Hammer - K-35	5 NO.
10	Diesel Hammer - K-25	5 NO.
11	Diesel Hammer - K-46	2 NO.
12	Vibrio Hammer - 5 Ton & 7 Ton Capacity	2 NO.
13	Air Compressor	3 NO.
14	Sheet Pile Driving Hammer	3 NO.
15	25 Ton Capacity Crane	2 NO.

LIST OF MAJOR MACHINERY & EQUIPMENT AT MANUFACTURING WORKSHOP

SL. NO.	NAME OF EQUIPMENT	QUANTITY
1	LATH MACHINE - 6'-0"	4 NO.
2	LATH MACHINE - 8'-0"	2 NO.
3	LATH MACHINE - 10'-0"	3 NO.
4	LATH MACHINE - 12'-0"	3 NO.
5	SHAPER MACHINE	4 NO.
6	DRILL MACHINE	10 NO.
7	GAS CUTTER SET	20 NO.
8	WELDING MACHINE	15 NO.

LIST OF SOME SURVEY AND LAB EQUIPMENT

SL. NO.	NAME OF EQUIPMENT	QUANTITY
1	Total Station Machine	3 SETS
2	Theodolite Machine	2 SETS
3	Level Machine	8 SETS
4	Digital Concrete Compressive Strength Test Machine	2 SETS
5	Ph Meter (Digital)	10 NO.
6	Hydrometer	10 NO.
7	Pile Integrity Test Machine	2 SETS
8	Sieve Analysis Set	2 SETS
9	Field Compaction Machine	2 SETS
10	Aggregate Gradation Machine	2 SETS

LEGAL DOCUMENTS





Certificate of Incorporation (under Act XVIII of 1994)

No. C-126708/2015

*I hereby certify that **EngineeringSpin Ltd.** is this day incorporated under the Companies Act (Act XVIII) of 1994 and that the Company is Limited.*

*Given under my hand at **Dhaka** this **Fourth** day of **November** two thousand and **fifteen**.*

*By order of
Registrar*

*Assistant Registrar
Registrar of Joint Stock Companies & Firms
Bangladesh*



N.B. This certificate is digitally signed. Please find the soft copy to verify the signature.

ঢাকা উত্তর সিটি কর্পোরেশন

www.dncc.gov.bd



নাইসেল ইস্যুর বিবরণ

ই-ট্রেড লাইসেন্স

ইস্যুর তারিখ : 16/10/2022
ইস্যুর সময় : 15:13:40

নাইসেল নং : TRAD/DNCC/021688/2022

স্থানীয় সরকার (সিটি কর্পোরেশন) আইন, ২০০৯ (২০০৯ সনের ৬০ নং আইন) এর ধারা ৮৪- ৫৫ প্রকৃত ক্ষমতাবলে সরকার প্রদত্ত আদর্শ কর চুক্তিদান, ২০১৬ এর ১০ অনুচ্ছেদ অনুযায়ী ব্যবসা, বৃত্তি, পেশা বা পিছ প্রভিটের উপর আরোপিত কর আদায়ের লক্ষ্যে নির্দিষ্ট ব্যক্তি/ প্রতিষ্ঠানের আনুসঙ্গে অত্র ট্রেড লাইসেন্সটি ইস্যু করা হলো।

১। ব্যবসা প্রতিষ্ঠানের নাম	:	ইঞ্জিনিয়ারিং প্লিন সি:	ওয়ার্ড / মার্কেট:	৬
২। প্রতিষ্ঠানের মালিকের নাম	:	মোঃ মিয়াফিল ইসলাম (চেয়ারম্যান)		
৩। পিতা / স্বামীর নাম =	:	জোয়াহের আলী		
৪। মাতার নাম	:	মোছঃ হালিমা বাতুন		
৫। ব্যবসার প্রকৃতি	:	লিমিটেড কোম্পানী		
৬। ব্যবসার ধরণ	:	প্রথম শ্রেণীর টিকাদার,সবরগাছাকারী		
৭। প্রতিষ্ঠানের ঠিকানা	:	৬২/৬/ই,উত্তর কানপী,পল্লবী,মিরপুর,ঢাকা		
৮। অফিস / বাছার সূচনা এনাকর	:	২, মিরপুর		
৯। এনআইডি/পাসপোর্ট/জাম লিব: নং ফোন	:	৭০২২০৭৪০৪৭ ০১৭১১০৪২৪৮৮	বিআইএন নং: ই-নেইল:	
১০। পূর্ব বছর	:	২০২২-২০২৩ (নির্ধারিত)	ব্যবসা শুরু তারিখ:	২০২২/১০/২২
১১। মালিকের বর্তমান ঠিকানা	:		মালিকের স্থায়ী ঠিকানা	
হোজিং নং	:		হোজিং নং	:
রোড নং	:		রোড নং	:
গ্রাম / মহলা	:	সেকশন-১১,ত্রফ-ডি	গ্রাম / মহলা	:
পোস্টকোড	:	মিরপুর-১২১৬	পোস্টকোড	:
খানা	:	পল্লবী	খানা	:
জেলা	:	ঢাকা	জেলা	:
বিভাগ	:	ঢাকা	বিভাগ	:
১২। ট্রেড লাইসেন্স/নবায়ন ফি(বার্ষিক)	:			
লাইসেন্স/নবায়ন ফি	:	৪০০০	সাইনবোর্ড ফর	:
সারচার্জ	:	০	ভ্যাট	:
স্বাক্ষর / উৎসেধক	:	৪০০০	৪ই মূল্য	:
বকেয়া (১)	:	০	ফর্ম ফি	:
সরকারী ফি	:	৪০২.৫০	অন্যান্য ফি	:
	:		সর্বমোট	:

অত্র ট্রেড লাইসেন্স এর মেয়াদ ০১ শে জুন, ২০২৩ পর্যন্ত

৩ম

নাইসেল ও বিজ্ঞাপন সুপারভাইজার



Handwritten signature

কর কর্মকর্তা

Transaction Summary Customer Copy

Transaction Type : Bill Pay By Cash
Transaction ID : 153492799
Transaction Date : October 16, 2022
Initiator ID : 01964041608
From Account : 7017740022358
Biller ID : 1451
Biller Name : DNCC TRADE LICENSE CORRECTION FEE
Depositor Mobile No. : 01737235883
Trade License Number : TRAD/DNCC/021688/2022
Total Amount : BDT 402.5
Fee : BDT 50
Generated Time : 2022/10/16 09:50:01

Signature:



This is a system generated report of DBBL





Government of the People's Republic of Bangladesh

National Board of Revenue

Taxpayer's Identification Number (TIN) Certificate

TIN : 841295497402

This is to Certify that **EngineeringSpin Ltd.** is a Registered Taxpayer of National Board of Revenue under the jurisdiction of **Taxes Circle-183 (Company)** , Taxes Zone **09, Dhaka.**

Taxpayer's Particulars :

- 1) Name : **EngineeringSpin Ltd.**
- 2) Registered Address/Permanent Address : **Rupayan P&F Square, Plot:62/5/E, Sagufta New Road, Pallabi, Dhaka**
- 3) Current Address : **Rupayan P&F Square, Plot:62/5/E, Sagufta New Road, Pallabi, Dhaka**
- 4) Previous TIN : **Not Applicable**
- 5) Status : **Company**

Date : January 31, 2021

Please Note:

1. A Taxpayer is liable to file the Return of Income under section 75 of the Income Tax Ordinance, 1984.
2. Failure to file Return of Income under section 75 is liable to-
 - (a) Penalty under section 124; and
 - (b) Prosecution under section 164 of the Income Tax Ordinance, 1984.



Deputy Commissioner of Taxes
Taxes Circle-183 (Company)
Taxes Zone 09, Dhaka
Address : 32, Garib E Newaz Avenue, Sector-13, Uttara,
Dhaka Phone :

N. B: This is a system generated certificate and requires no manual signature.



**Government of the People's Republic of Bangladesh
National Board of Revenue**

Mushak-2.3

Customs, Excise and VAT Commissionerate, Dhaka (West)
Mirpur Division

Value Added Tax Registration Certificate

This is to certify that the person whose details are given below is registered under
Value Added Tax and Supplementary Duty Act, 2012 (Act No. 47 of 2012)

BIN : 004636871-0401

Name of the Entity : ENGINEERINGSPIN LTD.
Trading Brand Name : ESL
Old BIN : N/A
e-TIN : 841295497402
Address : Rupyam P&F Square, Plot: 62/5/E, Shagufta New
Road, Pallabi, Dhaka; Pallabi PS; Dhaka-1216;
Bangladesh
Issue Date : 29/03/2022
Effective Date : 03/2022
Type of Ownership : Private Limited
Major Area of Economic Activity : Services



This is a system generated certificate and doesn't require any signature

PROJECT PHOTOS





Mezzanine Floor Work at Mawna, Gazipur.



DEA Work at Daraz Bangladesh Wirehouse, Tejgaon, Dhaka



Core Cutting Work at Daraz Bangladesh Wirehouse, Tejgaon, Dhaka.



DPDC Underground Cable Line Slab Casting, Dhaka.



DPDC Underground Cable Line Slab Casting, Dhaka.



DGFI Office Building, Khulna



RCC U Drain Works at Brahmanbaria



DPDC Sub-Station Project at Shyamoli, Dhaka.



ATM Assembly Plant, Zara Zaman Technology Ltd, Gazipur



Interior Works at ICRC Dhanmondi, Dhaka.



Sub-Station Steel Structure Work at Basila, Dhaka.

CONTACT



Address

Rupayan P & F Square, Plot: 62/5/E, North Kalshi, Shagufta New Road, Pallabi, Dhaka-1216,
Bangladesh.

Hotline: +8801719014457

A.S.M Rakibul Hassan

Managing Director

Tel: +8801719014457

E-Mail: rakib@espintltd.com

Syed Nuruzzaman Limon

Chief Commercial Officer

E-Mail: limon@espintltd.com